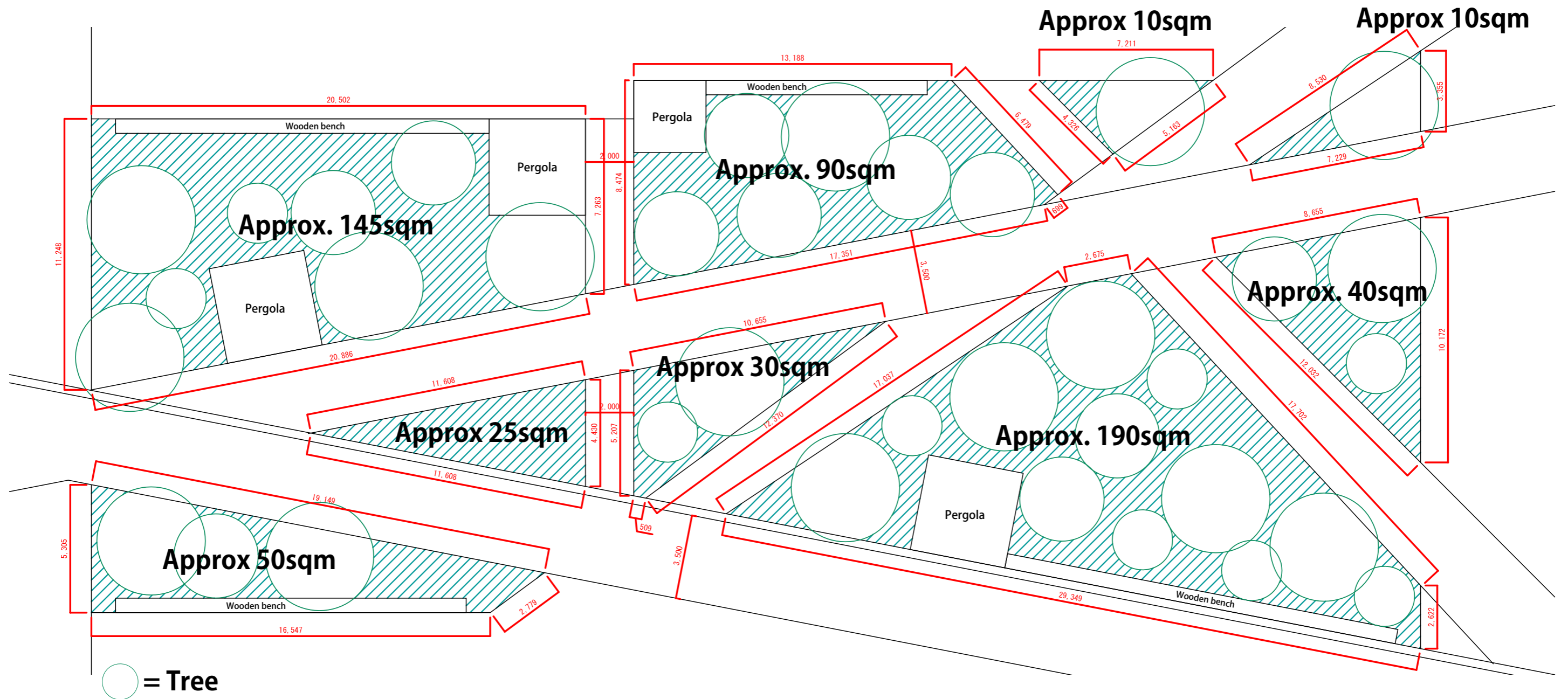




"Alley of environment" Installation position "2"



Installation position "2"

Plan S = 1/200

- Installation at multiple places at the green spaces is preferable
- The location is at the roof square on the 2nd floor between building B and C
- Load limit is 400kg or less, and 300kg/sqm or less at each green area
- Trees can be relocated according to the installation. The height of trees will be approx. 6m to 10m

※Since all drawings and so forth are in the planning stage, there is a possibility of change.

