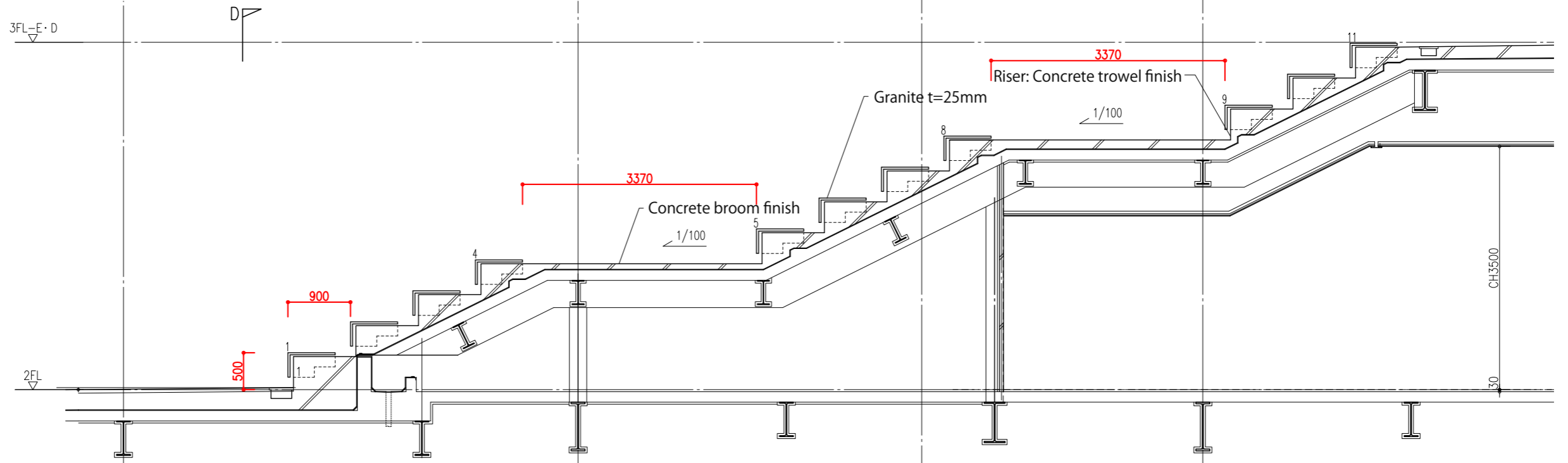
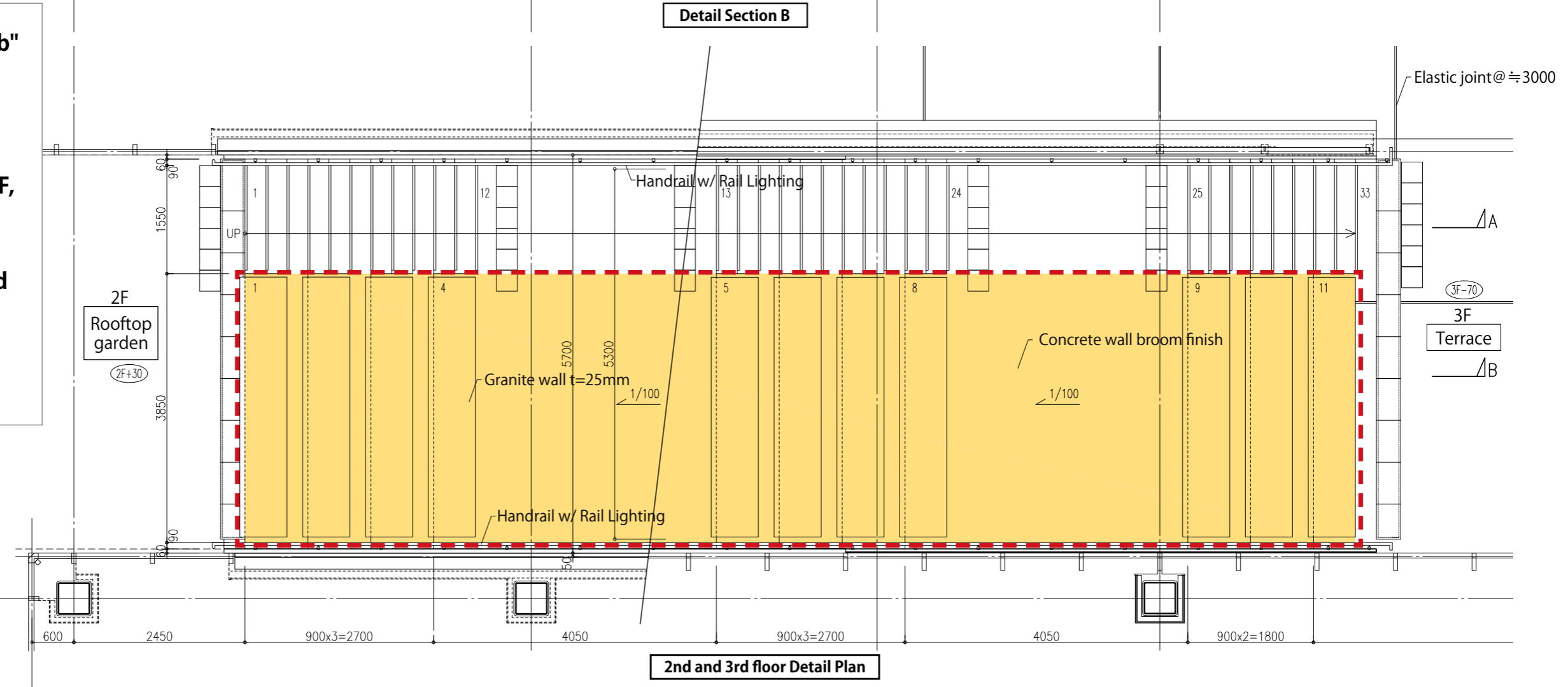




"Perch of the city" Installation position "4a, 4b"



Installation position "4a, 4b"
Detail plan • Detail section
S = 1/60
 • Building D, Building E 2-3F,
Outdoor Staircase
 • Load limit is 2t or less, and
350kg/sqm or less per
loading position



※About the installation position 4, in relation to the construction method,
 please keep in mind that the artwork anchored to the building is not an option.
 Please make sure that the structure of your artwork is able to stand alone to prevent turn over.



※Since all drawings and so forth are in the planning stage, there is a possibility of change.



"Perch of the city" Installation position "4a, 4b"



※About the installation position 4, in relation to the construction method, please keep in mind that the artwork anchored to the building is not an option. Please make sure that the structure of your artwork is able to stand alone to prevent turn over.