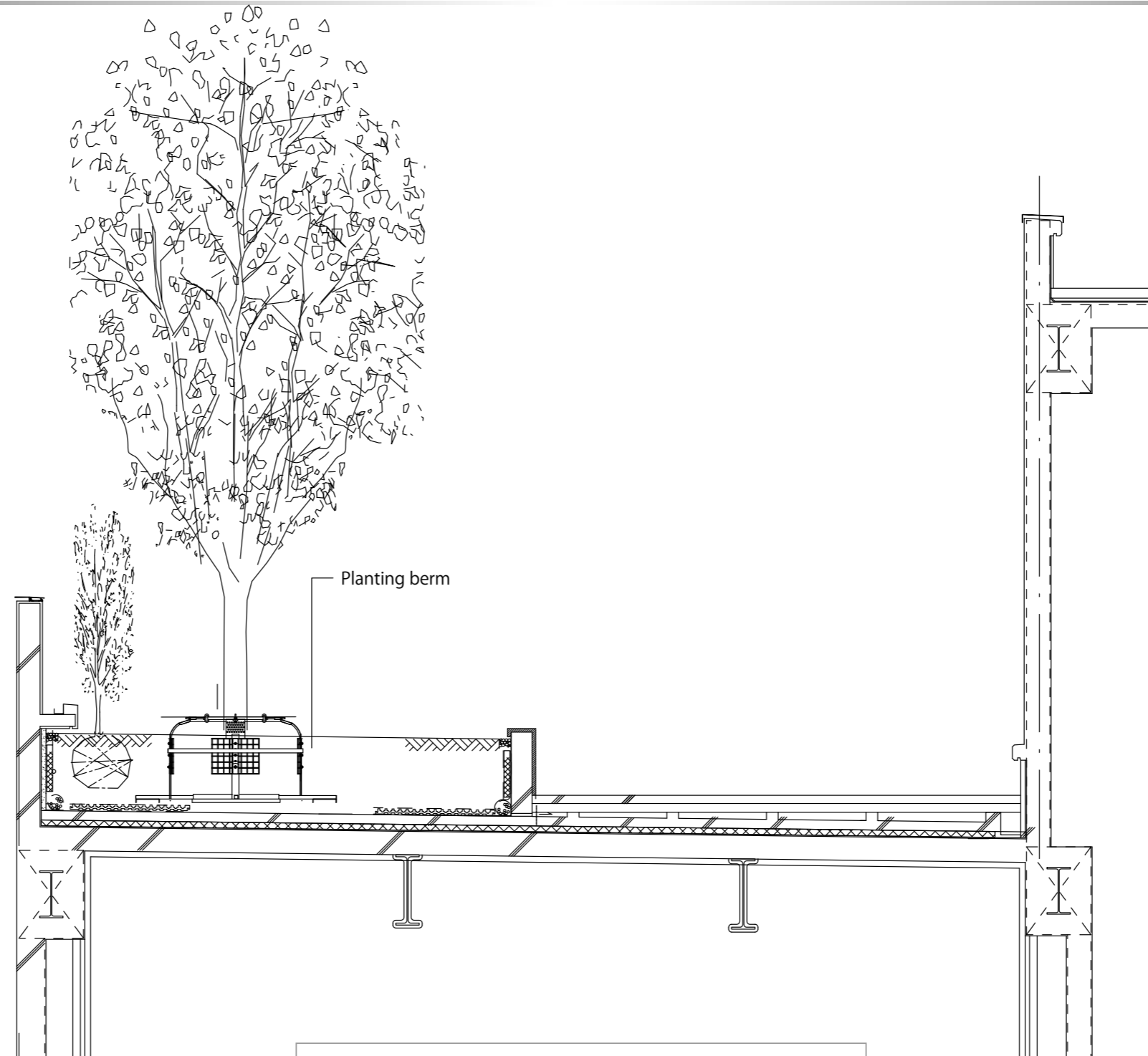


○ = Tree

**Installation position "5"    Plan    S = 1/200    Hall Rooftop**

- **Load limit is 250kg/sqm or less**
- **Trees can be relocated according to the installation.**

**The height of trees will be approx. 6m to 10m.**



**Installation position "5"**  
**Section S = 1/50**  
**Hall Rooftop**

※Since all drawings and so forth are in the planning stage, there is a possibility of change.

